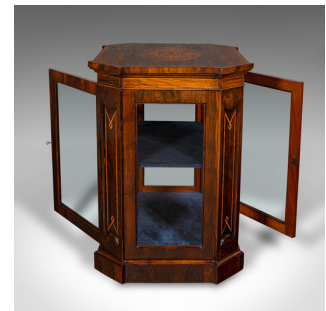


## Antique Jeweller's Display Cabinet, English, Glazed Shop Retail Case, Regency



### DESCRIPTION

Our Stock # 18.9882

This is an antique jeweller's display cabinet. An English, rosewood and glass shop retail case, dating to the Regency period, circa 1820.

- Superb cabinetry in a fascinating form with fully glazed sides
- Displays a desirable aged patina and in very good order
- Select stocks present fine grain interest and rich caramel hues
- Quality glazing presents a clear, bright appearance and free of marks
- Unusual quarterfoil form with canted corners adds distinction
- Shaped top hosts a striking marquetry medallion with boxwood stringing
- Saffron-hued stringing adds further decoration to the upper fascia
- Demi-lune inverted field panels host crossed over diamond inlays in walnut
- Doors opening at the front and rear, dressed with inset locks — key present
- Dual access lending the cabinet to use in a shop retail environment
- Removable shelf to the interior, lined with a tasteful blue velvet
- Repository sticker to the underside for Waring & Gillow from November 1913

Search [London Fine for #18.9882](#) , or scan the QR code for more photos and details

### DIMENSIONS

Max Width: 69.5cm (27.25")  
 Max Depth: 58.5cm (23")  
 Max Height: 81cm (32")  
 Shelf Width: 57cm (22.5")  
 Shelf Depth: 47cm (18.5")  
 Upper Shelf Height: 25cm (9.75")  
 Lower Shelf Height: 32.5cm (12.75")

### LIST PRICE

£2,950.00

