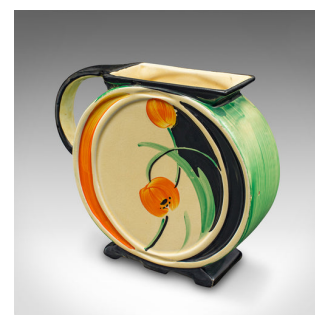


Vintage Display Jug, English, Ceramic, Dried Flower Vase, Art Deco, Circa 1930



**DESCRIPTION**

Our Stock # 18.9962

This is a vintage display jug. An English, ceramic dried flower vase, dating to the early 20th century, circa 1930.

- Fascinatingly unusual shape with a cheerful decor
- Displays a desirable aged patina throughout
- Quality ceramic finished in light lemon yellow
- Distinctive drum shape with serpentine handle
- Accentuated with California poppies in orange and green
- Myott maker's mark to base in gold finish

This is a charming vintage display jug, ideal for use with dried flower arrangement. Delivered ready to enjoy.

Search [London Fine for #18.9962](#) , or scan the QR code for more photos and details

**DIMENSIONS**

Max Width: 20cm (7.75")

Max Depth: 6cm (2.25")

Max Height: 16.5cm (6.5")

