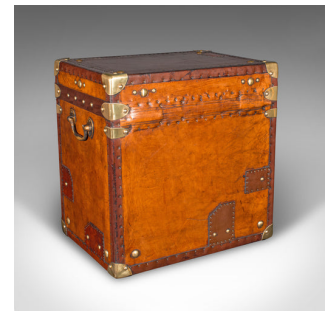


## Pair Of Vintage Officer's Campaign Luggage Cases, English, Leather, Nightstand



### DESCRIPTION

Our Stock # 24043

This is a pair of vintage officer's campaign luggage cases. An English, leather and brass bedside nightstand, dating to the late 20th century, circa 1980.

- Exquisite casework, with beautifully appointed detail and finishes
- Displaying a desirable aged patina and in good order throughout
- Quality leather tanned to a rich caramel hue with lightly aged finish
- Bound to corners with brass cappings over leather straps
- Dressed with a brass slide clasp to secure the stout lids when in transit – keys

absent

- Once open, the lids remain raised upon cornflower blue straps
- Bright burgundy coloured textile linings in pleasingly clean order
- The tactile lining adorned with brass press stud finish
- Military interest to the front fascia, with the Royal Crown motif and King's Regiment

Badge

- Each case numbered 1 & 2 respectively with brass stud decor to the fascia and

lid edge

- Brass drop handles adorn either side, for ease of carriage

### DIMENSIONS

Max Width: 52cm (20.5")

Max Depth: 36.5cm (14.25")

Max Height: 51cm (20")

Interior Width: 45.5cm (18")

Interior Depth: 32.5cm (12.75")

Interior Height: 46.5cm (18.25")



Search [London Fine for #24043](#) , or scan the QR code for more photos and details

+44 (0) 207 1833 511

London Fine Ltd  
 The Antique Village  
 The Old Whiteways Cider Factory  
 Hele, Devon, EX5 4PW

[sales@londonfine.co.uk](mailto:sales@londonfine.co.uk)

E. & O. E.