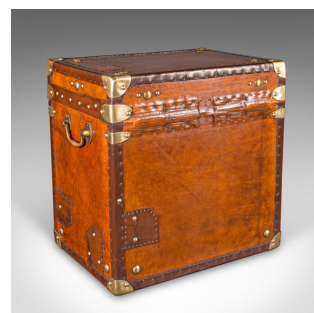


Pair Of Vintage Campaign Luggage Cases, English, Leather, Bedroom Nightstands



DESCRIPTION

Our Stock # 24044

This is a pair of vintage campaign luggage cases. An English, leather and brass bedside nightstand, dating to the late 20th century, circa 1980.

- Superb casework, with beautifully appointed detail and finishes
- Displaying a desirable aged patina and in good order throughout
- Quality leather tanned to a rich caramel hue with lightly aged finish
- Bound to corners with brass cappings over leather straps
- Dressed with brass slide clasp to secure the stout lids when in transit – keys absent
- Once open, the lids remain raised upon blue straps
- Bright crimson coloured textile linings in pleasingly clean order
- The tactile lining adorned with brass press stud finish
- Military interest to the front fascia, with the insignia for the Royal Pioneer Corps
- Replete with the Queen Elizabeth II Royal Cypher crown emblem
- Brass shields adorn the fascia, one with engraved monogram

Search [London Fine for #24044](#) , or scan the QR code for more photos and details

DIMENSIONS

Max Width: 52cm (20.5")
 Max Depth: 36.5cm (14.25")
 Max Height: 51cm (20")
 Interior Width: 45.5cm (18")
 Interior Depth: 32.5cm (12.75")
 Interior Height: 46.5cm (18.25")

