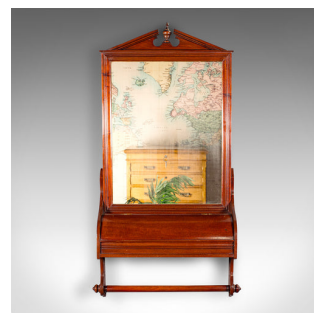
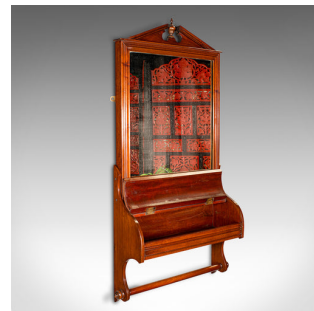


Antique Valet Mirror, Glove Box, English, Reception, Scarf Rail, Victorian, 1900



DESCRIPTION

Our Stock # 24163

This is an antique valet mirror with glove box. An English, mahogany reception mirror with scarf rail, dating to the late Victorian period, circa 1880.

- Delightfully tasteful reception hall mirror with useful glove box
- Displays a desirable aged patina and in good order
- Select stocks present fine grain interest and rich russet hues
- Original mirror plate hosts a desirable minor foxing commensurate with age
- Attractive double canted pediment with small finial to the top
- Clear, bright mirror set within a fluted frame above a prominent lower section
- Dome lid lifts to reveal the glove box compartment, ideal for keys or other items
- Wide rail suitable for resting scarves set beneath the mirror
- Dressed with a pair of brass mounting loops, ideal for hanging

This is a fascinating antique valet mirror with a pleasingly original mirror plate a dashing frame offering great colour. Delivered ready for the home.

Search [London Fine for #24163](#) , or scan the QR code for more photos and details

DIMENSIONS

Max Width: 47cm (18.5")
 Max Depth: 14cm (5.5")
 Max Height: 87cm (34.25")
 Mirror Plate Width: 34cm (13.5")
 Mirror Plate Height: 44cm (17.25")

LIST PRICE

£895.00

