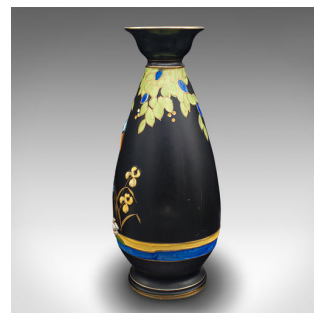


Pair Of Vintage Display Vases, English, Satin Finish, Kingfisher, Art Deco, 1930



DESCRIPTION

Our Stock # 24167

This is a pair of vintage display vases. An English, satin finished vase with kingfisher decor, dating to the Art Deco period, circa 1930.

- Beautifully presented vases graced with appealing colour and finish
- Displaying a desirable aged patina and in good order throughout
- Striking satin black ground over the ceramic baluster form
- Appealing kingfishers sit upon a branch with a river bed below
- Relief decor in a palette of blue, yellow and green catches the eye
- Maker's mark to base for Falcon Glendoza Ware, embossed Athens - Made in England

This is a striking pair of vintage display vases with superb colour and appealing relief decor. Delivered ready to display.

Search [London Fine for #24167](#) , or scan the QR code for more photos and details

DIMENSIONS

Max Width: 14cm (5.5")
Max Depth: 14cm (5.5")
Max Height: 35.5cm (14")
Opening Diameter: 3.5cm (1.5")

LIST PRICE

£895.00

