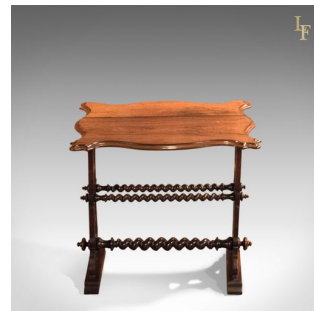


Victorian Rosewood Side Table, c.1860



DESCRIPTION

Our Stock # 10.1406

This is an antique side table dating to the mid-Victorian period c.1860.

The beautifully scalloped top with moulded edge detail displays the rosewood grain detail and colour beautifully beneath a lustrous waxed finish, complimenting the darker finish to the frame.

The table is raised on a pair of pierced panel legs that scroll out at the foot in foliate formed brackets, that anchor them to the classically formed feet.

The legs are united by a stout barley twist stretcher at the base with a pair of smaller stretchers above for added stability and strength. Each one dressed with turned cappings.

A super little table with solid joints, delivered waxed, polished and ready for the home.

Search [London Fine for #10.1406](#), or scan the QR code for more photos and details

DIMENSIONS

Max Width: 56cm (22")

Max Depth: 41cm (16.25")

Max Height: 56cm (22")

