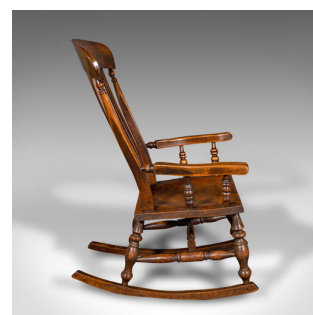


Antique Lath Back Rocking Chair, English Elm, Beech, Elbow Seat, Victorian, 1880



DESCRIPTION

Our Stock # 18.9780

This is an antique lath back rocking chair. An English, elm and beech elbow seat, dating to the late Victorian period, circa 1880.

- Superb Victorian craftsmanship to this traditionally appealing rocker
- Displays a desirable aged patina and in good order
- Select elm and beech shows fine grain interest throughout
- Attractive caramel hues beam beneath a quality wax polish finish
- Crest rail of deep form, with bowed and arched profile
- Gently curved laths create an eye-catching element
- Pairs of turned balusters supporting each serpentine arm
- Seat squab with gently recessed saddle slab adds to the comfort
- Raised upon pleasingly turned and collared, stout legs
- United by a turned H-stretcher with tapered spindles
- The long, arched rocking feet provide a relaxing, gentle motion

Search [London Fine for #18.9780](#) , or scan the QR code for more photos and details

DIMENSIONS

Max Width: 58cm (22.75")
 Max Depth: 73cm (28.75")
 Max Height: 99cm (39")
 Seat Width: 39cm (15.25")
 Seat Depth: 38.5cm (15.25")
 Seat Height: 38.5cm (15.25")

