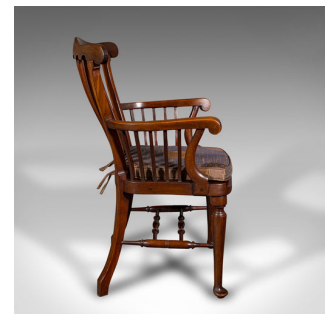


## Antique Cleric's Armchair, English, Elbow Chair, Georgian Revival, Victorian



### DESCRIPTION

Our Stock # 24193

This is an antique cleric's armchair. An English, mahogany and beech open elbow chair in Georgian revival taste, dating to the late Victorian period, circa 1890.

- Elegantly crafted armchair with an attractive finish and colour
- Displays a desirable aged patina and in very good antique condition
- Select stocks present fine grain interest and deep russet hues
- Tasteful silk cotton cushion with embroidered decor and useful ties
- Shaped and bowed crest rail with arcading to the lower edge
- Seventeen laths create the striking open back rest and arm supports
- The sinuous, gently turned out arms terminate in scrolled knuckles
- Shaped seat squab provides a comfortable seat at a height of 44.5cm (17.5")
- Standing upon a pair of turned front legs with delightful pad feet
- Bold block knees fascinate with their juxtaposition to the cylindrical legs
- Distinctive splayed rear legs finish with block feet, dramatically angled away from the leg

Search [London Fine for #24193](#) , or scan the QR code for more photos and details

### DIMENSIONS

Max Width: 58cm (22.75")  
 Max Depth: 62.5cm (24.5")  
 Max Height: 98.5cm (38.75")  
 Seat Width: 48cm (19")  
 Seat Depth: 46cm (18")  
 Seat Height: 44.5cm (17.5")

### LIST PRICE

£1,895.00

