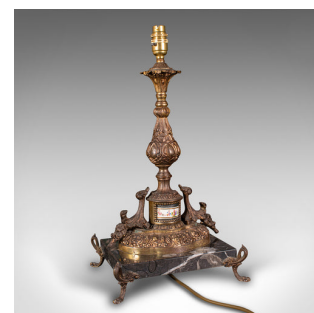
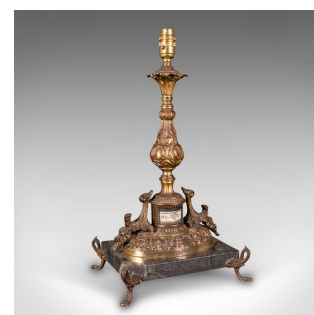


Pair Of Antique Lamp Bases, French, Gilt Metal, Marble, Table Light, Edwardian



DESCRIPTION

Our Stock # 24164

This is a pair of antique lamp bases. A French, gilt metal and marble wired table light, dating to the Edwardian period, circa 1910.

- Delightfully ornate lamp bases of substantial proportion
- Displaying a desirable aged patina and in good order
- Gilt metal presents deep golden tones throughout
- Set upon black marble bases with appealing vein interest
- Fully wired and ready to be matched with a shade of choice
- Profusely detailed support and mount, with lobes and scroll motif
- Ceramic cameo inserts with colourful foliate bouquets
- Standing upon a quartet of gilt metal feet with looped knees
- Lamp accepts a standard small bayonet bulb
- Dressed with a quality length of cable and British Standards compliant UK 3 pin plug (Type G)
- Superb weight at 5.8kg and 5.3kg respectively (12.78 & 11.68 lb)

Search [London Fine for #24164](#) , or scan the QR code for more photos and details

DIMENSIONS

Max Width: 25cm (9.75")
Max Depth: 20.5cm (8")
Max Height: 47cm (18.5")

LIST PRICE

£2,450.00

