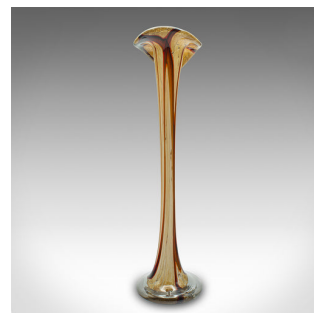
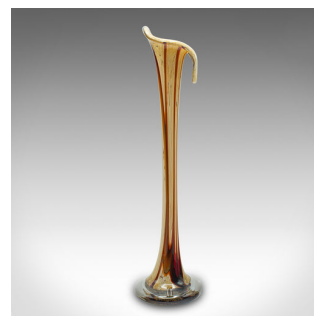
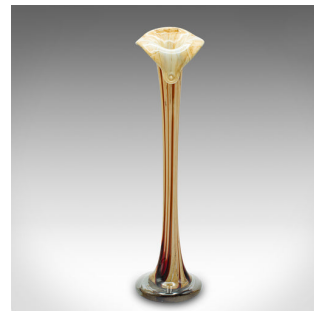


Tall Vintage Stem Vase, Italian, Murano Glass Flower Sleeve, Mid Century, C.1960



DESCRIPTION

Our Stock # 24259

This is a tall vintage slender stem vase. An Italian, Murano glass flower sleeve, dating to the mid century, circa 1960.

- Fascinating lily form with a distinctive colour palette
- Displays a desirable aged patina and in good order
- Blown art glass with a tall, slender profile
- Cream ground with a red and black streaked pattern
- Petal-like rim redolent of lilies, flared out over the stem

This is an unusual and appealing vintage slender stem vase, with a distinctive Murano aesthetic. Delivered ready to display.

Search [London Fine for #24259](#) , or scan the QR code for more photos and details

DIMENSIONS

Max Width: 10cm (4")

Max Depth: 10cm (4")

Max Height: 40cm (15.75")

