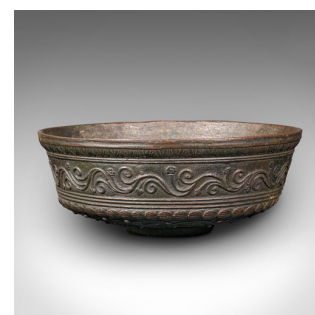


Antique Decorative Bowl, Japanese, Bronze Censer, Edo Period, Georgian,  
C.1750



**DESCRIPTION**

Our Stock # 24200

This is an antique decorative bowl. A Japanese, bronze censer from the Edo period, dating to the 18th century, circa 1750.

- Pleasingly decorative dish with animal and scroll detail
- Displays a desirable aged patina, commensurate with age
- Antique bronze hosts reddish brown hues, with hints of verdigris
- Interior presents a lightly time worn appearance
- Fascia and base hosts relief form animal figures and chased patterns
- Good weight in the hand at 2.16kg (4.76 lb)

This is a charming antique decorative bowl, graced with appealing proportion and a lightly aged appearance. Delivered ready to display.

Search [London Fine for #24200](#) , or scan the QR code for more photos and details

**DIMENSIONS**

Max Width: 20.5cm (8")  
Max Depth: 20.5cm (8")  
Max Height: 8cm (3.25")

**LIST PRICE**

£1,495.00

