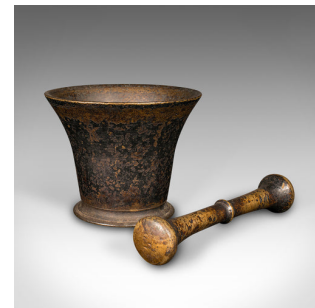


Antique Chemist's Mortar & Pestle, English, Bronze, Apothecary, Georgian, C.1720



DESCRIPTION

Our Stock # 24198

This is an antique chemist's mortar & pestle. An English, weathered bronze apothecary aid, dating to the early Georgian period, circa 1720.

- Superb, 300 year old example with appealing weathering
- Displays a desirable, original antique condition
- Substantial bronze presents original time worn patina
- Warm golden hues show through the patination
- Replete with a tactile bronze pestle

This is a delightful antique chemist's mortar & pestle, with a superb time worn appeal. Delivered ready to display.

Search [London Fine for #24198](#) , or scan the QR code for more photos and details

DIMENSIONS

- Max Width: 17cm (6.75")
- Max Depth: 14cm (5.5")
- Max Height: 16.5cm (6.5")
- Mortar Diameter: 14cm (5.5")
- Mortar Height: 11.5cm (4.5")
- Pestle Diameter: 3.5cm (1.5")
- Pestle Length: 19cm (7.5")

