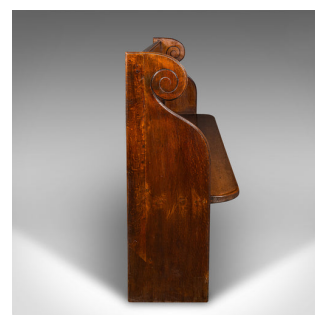
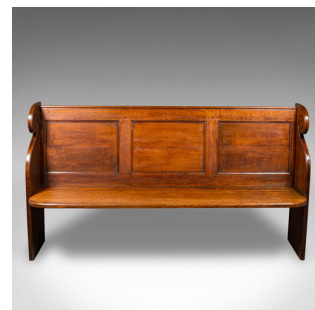


Antique Panelled Church Pew, English, Oak Bench, Ecclesiastic, Victorian, C.1850



DESCRIPTION

Our Stock # 24426

This is an antique 3 panelled church pew. An English, oak bench with ecclesiastic taste, dating to the early Victorian period, circa 1850.

- Superb in proportion and finish, with distinctive serpentine curvature
- Displays a desirable aged patina and in very good order
- Select oak shows fine grain interest and an abundance of medullary rays
- Beautiful, deep caramel hues beam beneath a wax polish finish
- Fascinating scrolled flourishes adorn the shaped wing backs
- Comfortable seating for three, with a field panel back rest
- Free standing upon a pair of stile legs - the generous space beneath ideal for storage
- Would grace a wide sun trap window, entrance hall or waiting room

This is a superb antique pew, with beautiful stocks and rich colour. Ideal for an institution, a hallway or as a fine window seat. Solid joints and construction, delivered ready for use.

Search [London Fine for #24426](#) , or scan the QR code for more photos and details

DIMENSIONS

Max Width: 188cm (74")
Max Depth: 47cm (18.5")
Max Height: 104.5cm (41.25")
Seat Width: 180.5cm (71")
Seat Depth: 36.5cm (14.25")
Seat Height: 46cm (18")
Under Storage Height: 43cm (17")

LIST PRICE

£1,295.00

