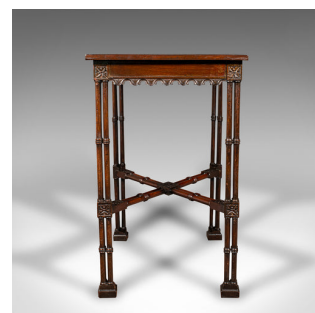
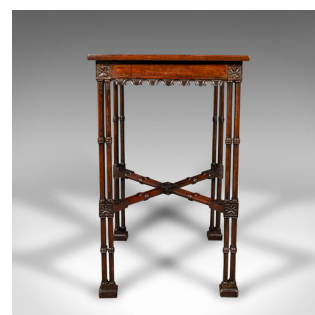
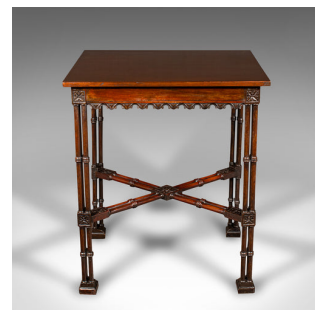


Antique Side Table, English, Occasional, Chippendale Taste, Georgian, Circa 1800



DESCRIPTION

Our Stock # 24195

This is an antique side table. An English, mahogany occasional table in Chippendale taste, dating to the Georgian period, circa 1800.

- Fine distinction to the fascinating relief carved detail and striking legs
- Displays a desirable aged patina and in good order throughout
- Select stocks present fine grain interest and rich caramel hues
- Of useful proportion for placement in a hallway, lounge or bedroom
- Superb example in the manner of Thomas Chippendale
- Low relief carved four leaf emblems adorn the corner of each fascia
- Arcading to apron edge accentuates pleasingly to each side
- Highly distinctive cluster column legs adjoined with a superb cross stretcher rail
 - Diamond confluence to the centre of the stretcher hosts a relief quatrefoil leaf carving
- Standing upon a quartet of block feet, the trio of columns terminating in a 90 degree angle

Search [London Fine for #24195](#) , or scan the QR code for more photos and details

DIMENSIONS

Max Width: 56cm (22")

Max Depth: 43cm (17")

Max Height: 68cm (26.75")

LIST PRICE

£1,295.00

