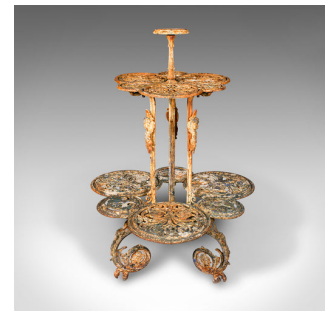


Antique Garden Jardiniere Stand, English, Cast Iron, Outdoor Planter, Victorian



DESCRIPTION

Our Stock # 24419

This is a large antique garden jardiniere stand. An English, weathered cast iron outdoor planter base, dating to the Victorian period, circa 1870.

- Striking garden jardiniere stand with a pleasingly time worn appearance
- Displays a desirably aged, original patina throughout
- Remnants of the original painted finish adorn the ornate cast iron frame
- Delightfully strong and robust, with a substantial and reassuring weight
- Circular motif accentuated with pierced fretwork a superb visual allure
- Arranged over two tiers with a small plinth standing above the whole
- Ideal for trailing plants such as Lobelia, Verbena or English Ivy
- Trio of uprights host foliate mounts accentuated with human mask forms
- Standing upon a trio of distinctive scrolled legs with foliate emblems

This is a fascinating and robust antique garden jardiniere stand, with a wonderfully original weathered appearance and offers a generous proportion. Delivered ready for the garden.

Search [London Fine for #24419](#) , or scan the QR code for more photos and details

DIMENSIONS

- Max Width: 78.5cm (31")
- Max Depth: 78.5cm (31")
- Max Height: 112cm (44")
- Upper Tier Width: 51cm (20")
- Upper Tier Depth: 51cm (20")
- Upper Tier Height: 20cm (7.75")
- Lower Tier Width: 78.5cm (31")
- Lower Tier Depth: 78.5cm (31")
- Lower Tier Height: 49cm (19.25")

