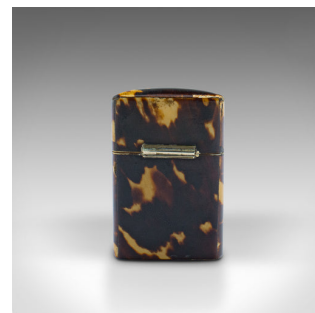
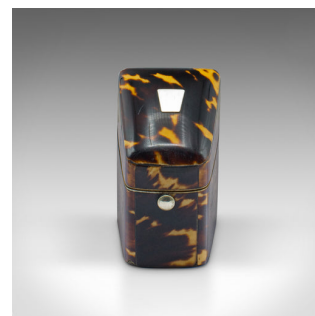


Small Antique Lady's Stamp Box, English, Faux Tortoiseshell Case, Edwardian



DESCRIPTION

Our Stock # 24354

This is a small antique lady's stamp box. An English, faux tortoiseshell case, dating to the Edwardian period, circa 1910.

- Charming and petite, offering an elegant home for stamps
- Displays a desirable aged patina and in good original order
- Striking faux tortoiseshell finish to the celluloid form
- Adorned with a small silver plate mount to the lid
- Interior outfitted with ten rows for holding stamps
- Lid interior dressed with a deep blue velvet lining

This is a delightful antique lady's stamp box, compact and easily stored in a small hand purse. Delivered ready to enjoy.

Search [London Fine for #24354](#) , or scan the QR code for more photos and details

DIMENSIONS

Max Width: 3.5cm (1.5")

Max Depth: 4cm (1.5")

Max Height: 5cm (2")

LIST PRICE

£395.00

