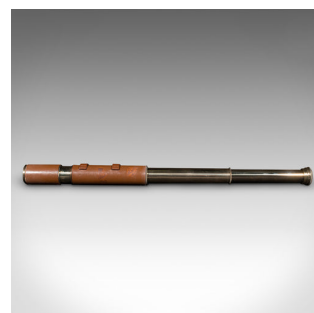
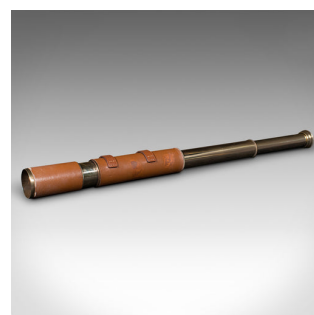


Vintage 2 Draw Telescope, English, Leather, Brass, Terrestrial Refractor, C.1960



DESCRIPTION

Our Stock # 24352

This is a vintage 2 draw telescope. An English, leather on brass terrestrial refractor, dating to the mid 20th century, circa 1960.

Perfect for bird watching, landscape appreciation, wildlife, or maritime observation. Equally suitable for observing the night sky

- <li class="p1">Charming, fully dressed vintage example with a tactile appeal
- <li class="p1">Displays a desirable aged patina throughout - eye cups present
- <li class="p1">Quality polished brass shows delightful golden brass hues
- <li class="p1">Primary barrel and lens shade dressed in a tasteful brown leather

<li class="p1">Two draw type, drawing from a usefully compact length of 28cm (11")

<li class="p1">When fully drawn with the sun shade extended, a length of 61.5cm (24.25")

<li class="p1">Objective lens diameter is typical at 35mm (1.5")

<li class="p1">Eyepiece finished with concentric ring turning and swivel type dust cover

Search [London Fine for #24352](#) , or scan the QR code for more photos and details

DIMENSIONS

Closed Length: 28cm (11")

Fully Drawn: 61.5cm (24.25")

Objective Diameter: 35mm (1.5")

Dressed Length: 30cm (11.75")

LIST PRICE

£895.00

