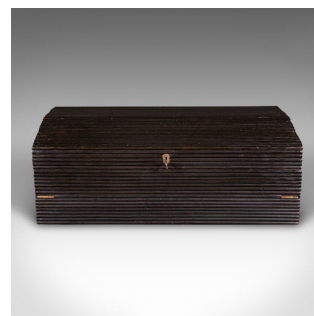


Antique Correspondence Box, Ceylon, Ebony, Campaign, Writing Slope, Victorian



DESCRIPTION

Our Stock # 24201

This is an antique gentleman's correspondence box. A Ceylonese ebony campaign writing slope, dating to the early Victorian period, circa 1850.

- <li class="p1">Fascinating grooved finish, with a well appointed suite of features
- <li class="p1">Displays a desirable aged patina and in good original order
- <li class="p1">Solid teak with distinctive appearance and deep brown tonality
- <li class="p1">Dressed with a brass lock escutcheon – in working order, key present

- <li class="p1">Slight apex to the lid, opening to reveal the fitted interior
- <li class="p1">Presents a pair of baize skivers, each lifting to access storage space
- <li class="p1">Trio of hidden drawers reside behind a lift-out fascia
- <li class="p1">Replete with paper roller, pen tray and document storage

This is an unusual and intriguing antique correspondence box, with a fascinating distinct appearance and useful interior. Solid joints and construction, delivered ready for the home.

Search [London Fine for #24201](#) , or scan the QR code for more photos and details

DIMENSIONS

Closed Width: 42.5cm (16.75")
 Closed Depth: 24.5cm (9.75")
 Closed Height: 14.5cm (5.75")
 Open Width: 42.5cm (16.75")
 Open Depth: 63cm (24.75")
 Open Height: 9.5cm (3.75")

LIST PRICE

£1,295.00

