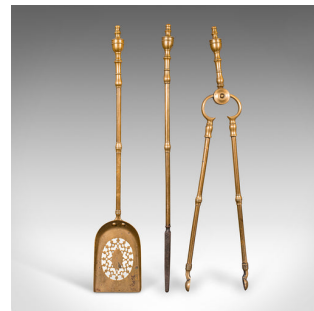


Trio Of Antique Fire Tools, English, Brass, Fireside Companion Set, Victorian



DESCRIPTION

Our Stock # 24209

This is a trio of antique fire tools. An English, brass fireside companion set, dating to the early Victorian period, circa 1850.

- <li class="p1">Appealing Early Victorian set, with three pleasingly weighted tools
- <li class="p1">Displaying a desirable aged patina and in good order throughout
- <li class="p1">Each tool crafted from quality brass with bright golden hues
- <li class="p1">Fine tools for accessorising a grand fireplace

- <li class="p1">Superb pierced fretwork accentuates the coal shovel
- <li class="p1">Shovel mounted to the handle with bold brass rivets
- <li class="p1">The tongs articulate upon a circular pivot below the turned handle
- <li class="p1">Fire poker replete with a cast iron, four-sided tip

This is a delightful trio of antique fire tools, an appealing companion set for the grander fireplace. Delivered ready for the home.

Search [London Fine for #24209](#) , or scan the QR code for more photos and details

DIMENSIONS

- Shovel Width: 11cm (4.25")
- Shovel Depth: 3cm (1.25")
- Shovel Height: 61cm (24")
- Tongs Width: 15cm (6")
- Tongs Depth: 3cm (1.25")
- Tongs Height: 61cm (24")
- Poker Diameter: 3cm (1.25")
- Poker Height: 61.5cm (24.25")

