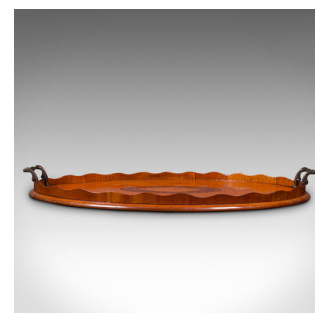
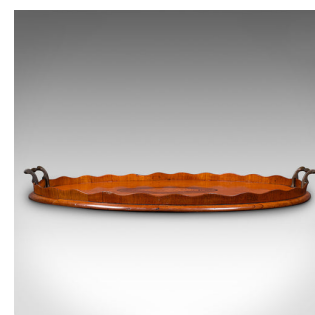


Antique Butler's Serving Tray, English Satinwood, Afternoon Tea Platter, Regency



DESCRIPTION

Our Stock # 24460

This is an antique butler's serving tray. An English, satinwood and boxwood afternoon tea platter, dating to the Regency period, circa 1820.

- <li class="p1">Attractive tray for serving guests, graced with Regency period elegance
- <li class="p1">Displays a desirable aged patina and in good order throughout
- <li class="p1">Satinwood stocks present fine grain interest and vibrant caramel hues
- <li class="p1">Centrepiece boxwood scallop shell motif set within an oval medallion
- <li class="p1">Distinctive wavy edge to tray, dressed with rolled carry handles to each end
- <li class="p1">Finished with a tactile dappled leather protective pad to the base

This is a striking antique butler's serving tray, with a quality appearance and generously sized. Solid joints and construction, delivered ready to serve.

Search [London Fine for #24460](#) , or scan the QR code for more photos and details

DIMENSIONS

- Max Width: 58.5cm (23")
- Max Depth: 38.5cm (15.25")
- Max Height: 5.5cm (2.25")
- Internal Width: 55.5cm (21.75")
- Internal Depth: 35.5cm (14")
- Internal Height: 2cm (.75")

