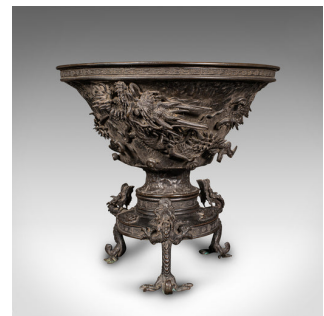


Antique Censer Bowl, Japanese, Bronze, Incense Burner, Dragon, Edo, Victorian



DESCRIPTION

Our Stock # 24407

This is an antique censer bowl. A Japanese, bronze incense burner with dragon motif, dating to the early Victorian period, circa 1850.

- <li class="p1">Striking Edo period (1603 - 1868) censer, with prominent dragon relief
- <li class="p1">Displays a desirable aged patina and in original order
- <li class="p1">Substantial bronze presents deep tonality with flourishes of verdigris
- <li class="p1">Two piece form, with the tapering bowl resting inside the three legged stand

- <li class="p1">Good weight in the hand at 3.65kg (8.04 lb)
- <li class="p1">Generously sized internal diameter of 13.5cm (5.25")
- <li class="p1">Stands upon a trio of shaped Dragon form legs
- <li class="p1">Character mark in relief to the base of the upper dish

This is a fascinating antique censer bowl, with the decorative relief displaying the malevolent Japanese dragon in all its menacing glory. Delivered ready for the home.

Search [London Fine for #24407](#) , or scan the QR code for more photos and details

DIMENSIONS

- Max Width: 23.5cm (9.25")
- Max Depth: 23.5cm (9.25")
- Max Height: 21.5cm (8.5")
- Internal Diameter: 13.5cm (5.25")

LIST PRICE

£2,250.00

