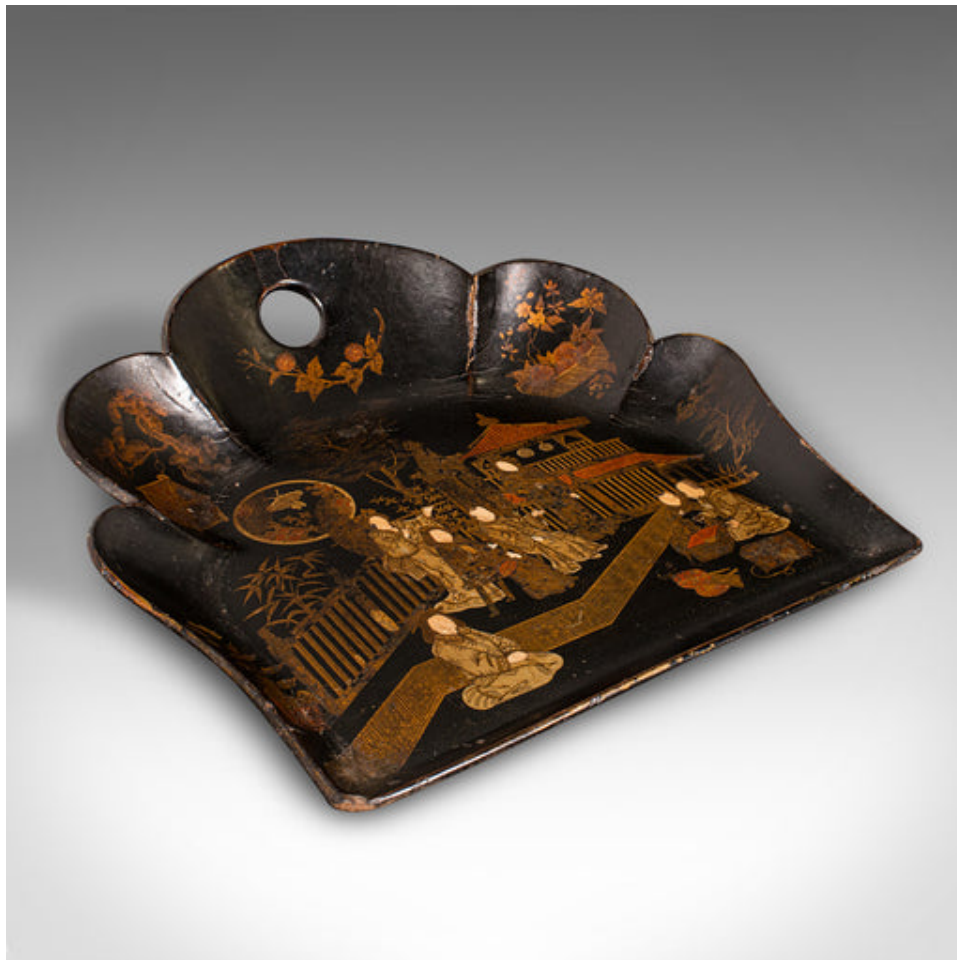


Antique Chinoiserie Crumb Tray, Japanese, Lacquer, Decorative, Late Victorian



DESCRIPTION

Our Stock # 24494

This is an antique Chinoiserie crumb tray. A Japanese, lacquered papier-mâché decorative hand tool, dating to the late Victorian period, circa 1900.

- <li class="p1">Delightful example of Chinoiserie with ornate decorative appeal
- <li class="p1">Displays a desirable aged patina with lightly time-worn appearance
- <li class="p1">Crafted from papier-mâché and lacquered with the distinctive black finish
- <li class="p1">Fan-shaped scallop forms with inset finger hole
- <li class="p1">Yellow and amber decor with figures and delicate tree and foliage

This is a wonderful antique Chinoiserie crumb tray, blessed with decorative appeal and a charming example of its type. Delivered ready to display.

Search [London Fine for #24494](#) , or scan the QR code for more photos and details

DIMENSIONS

Max Width: 26.5cm (10.5")

Max Depth: 25.5cm (10")

Max Height: 5.5cm (2.25")

