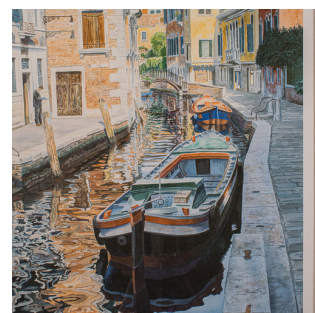


Contemporary Venetian Canal Print, English, Framed, Limited Edition, Hand Signed



DESCRIPTION

Our Stock # 24444

This is a contemporary Venetian canal print. An English, framed limited edition signed by the artist, circa 2000.

<li class="p1">Classic Venetian canal scene, individually numbered within a limited print run

<li class="p1">Displaying a desirable contemporary patina and in a quality golden frame

<li class="p1">Printed on quality paper stock with a high resolution reproduction

<li class="p1">Dressed to the rear with mounting cord for ease of hanging

<li class="p1">A duo of boats occupy the foreground, with a single figure reading at the side

<li class="p1">Superb reflections within the canal, mirroring the distinctive Venetian architecture

<li class="p1">Handwritten with number 184 of 475 to the bottom left corner

<li class="p1">Titled 'Lost in Venice' and signed by the artist in pencil as Millwood

This is a charming contemporary Venetian canal print, with an attractive rendition of this popular location. Delivered ready to display

DIMENSIONS

Max Width: 64cm (25.25")

Max Depth: 2cm (.75")

Max Height: 76.5cm (30")

Print Width: 40.5cm (16")

Print Height: 53.5cm (21")

LIST PRICE

£895.00



Search London Fine for #24444 , or scan the QR code for more photos and details
 +44 (0) 207 1855 511

London Fine Ltd
 The Antique Village
 The Old Whiteways Cider Factory
 Hele, Devon, EX5 4PW

sales@londonfine.co.uk
 E. & O. E.