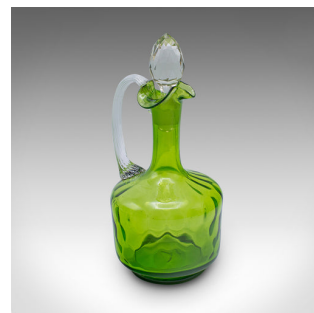
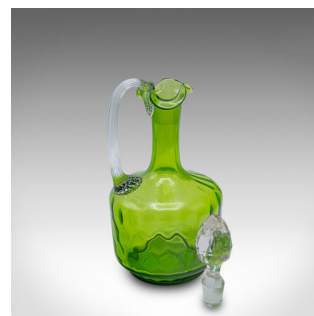


Vintage Aperitif Serving Set, English, Ewer, Wine Glasses, Art Deco, Circa 1930



DESCRIPTION

Our Stock # 24413

This is a vintage aperitif serving set. An English, glass ewer and glasses service, dating to the Art Deco, circa 1930.

- Eye-catching green hues to this distinctive serving set
- Displaying a desirable aged patina throughout
- Verdant green glass displays wonderful highlights
- Ewer body accentuated with a gently dimpled finish
- Cut glass stopper fits neatly within the ewer rim
- Each of the eight glasses hosts a ribbed finish

This is a striking vintage aperitif serving set, with great colour and appealing glass finishes. Delivered ready to enjoy.

Search [London Fine for #24413](#) , or scan the QR code for more photos and details

DIMENSIONS

Ewer Width: 10.5cm (4.25")
 Ewer Depth: 10.5cm (4.25")
 Ewer Height: 23cm (9")
 Glass Diameter: 7.5cm (3")
 Glass Height: 17.5cm (7")

LIST PRICE

£795.00

