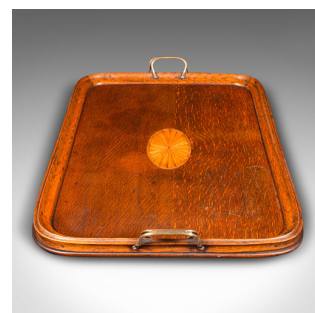
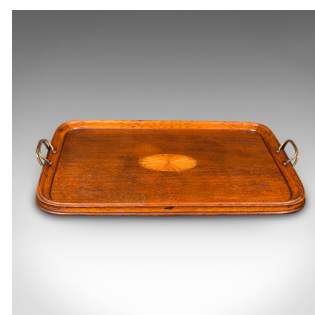
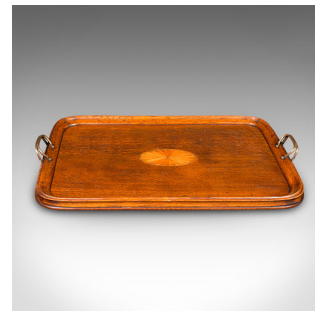


## Antique Tipple Serving Tray, English, Oak, Boxwood, Afternoon Tea, Edwardian



### DESCRIPTION

Our Stock # 24473

This is an antique tipple serving tray. An English, oak and boxwood inlaid afternoon tea platter, dating to the Edwardian period, circa 1910.

- Appealingly presented tray with a distinctive appearance
- Displays a desirable aged patina and in good order
- Quality oak stocks present fine grain interest and an abundance of medullary rays
- Superb warm caramel hues accentuate the figuring beautifully
- Dressed with unusual twin post carry handles, crafted from brass
- Striking boxwood medallion inlaid to the centre in fan form

This is an attractive antique tipple serving tray, equally adept at providing a tea service for more informal gatherings. Delivered ready to enjoy.

Search [London Fine for #24473](#) , or scan the QR code for more photos and details

### DIMENSIONS

Max Width: 56cm (22")  
 Max Depth: 36.5cm (14.25")  
 Max Height: 5.5cm (2.25")  
 Internal Width: 47.5cm (18.75")  
 Internal Depth: 31cm (12.25")  
 Internal Height: 2cm (.75")

### LIST PRICE

£495.00

