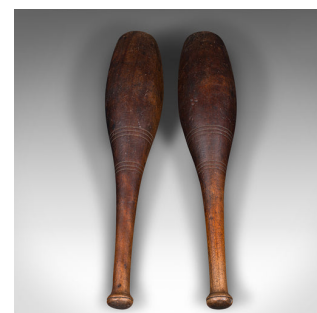
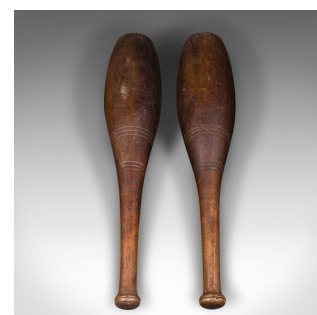


Pair Of Antique Exercise Clubs, English, Weighted Beech, Fitness Aid, Circa 1920



DESCRIPTION

Our Stock # 24373

This is a pair of antique exercise clubs. An English, weighted beech fitness aid, dating to the early 20th century, circa 1920.

- <li class="p1">Fascinating exercise aids, also known as Indian Clubs
- <li class="p1">Displaying a desirable aged patina throughout
- <li class="p1">Turned beech presents deep caramel hues
- <li class="p1">Accentuated with spun detail and gently chamfered handles
- <li class="p1">Weighing 1.29kg (2.84 lb) and 1.28kg (2.82 lb) respectively

This is a charming pair of antique exercise clubs, with an attractive appearance and as good to use today as a hundred years ago. Delivered ready to enjoy.

Search [London Fine for #24373](#) , or scan the QR code for more photos and details

DIMENSIONS

- Max Width: 9.5cm (3.75")
- Max Depth: 9.5cm (3.75")
- Max Height: 50cm (19.75")

LIST PRICE

£495.00

