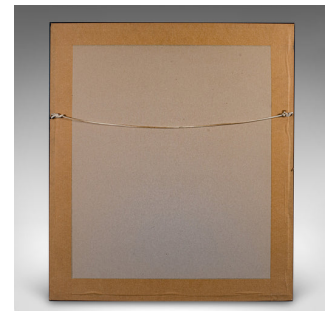


Antique County Map, Cambridgeshire, English, Framed Cartography, Robert Morden



DESCRIPTION

Our Stock # 24434

This is an antique county map of Cambridgeshire. An English, framed atlas engraving of cartographic interest By Robert Morden, dating to the late 17th century and later.

<li class="p3">Superb lithography of Cambridgeshire and its county detail, perfect for display

<li class="p3">Displaying a desirable aged patina and in very good order

<li class="p3">Fascinating cartography, appealingly set within a quality, later frame

<li class="p3">Detail given to The Hundreds, the administrative divisions within counties until the mid 19th century

<li class="p3">Mapped by Robert Morden (1650 - 1703) in high detail and sold by Abel Swal & John Churchill

<li class="p3">Dressed to the rear with hanging cord for ease of mounting

This is a quality antique county map of Cambridgeshire, with fine cartographic interest. Delivered ready to display.

Search [London Fine for #24434](#) , or scan the QR code for more photos and details

DIMENSIONS

Max Width: 54cm (21.25")

Max Depth: 2.5cm (1")

Max Height: 61.5cm (24.25")

Map Width: 37cm (14.5")

Map Height: 43cm (17")

LIST PRICE

£795.00

