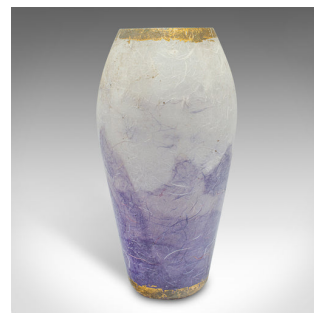


Contemporary Decorative Flower Vase, English, Art Glass, Posy Sleeve, Applique



DESCRIPTION

Our Stock # 24149

This is a contemporary decorative flower vase. An English, art glass sleeve with straw silk finish, by Margaret Johnson.

- <li class="p1">Beautiful colour with fish motif attracts the eye
- <li class="p1">Displays a desirable, contemporary appearance
- <li class="p1">Tastefully coloured glass with a mellow lilac over white ground
- <li class="p1">Unusual straw silk a hallmark of the artist, creating a tactile finish
- <li class="p1">Appliqué fish adorn the vase in an eye-catching shoal effect
- <li class="p1">Based in Devon, Margaret Johnson studied fine art and sculpture at Goldsmiths College in London

This is a delightful contemporary decorative flower vase, with tranquil colour and an unusual finish. Delivered ready to enjoy.

Search [London Fine for #24149](#) , or scan the QR code for more photos and details

DIMENSIONS

Max Width: 14cm (5.5")
 Max Depth: 14cm (5.5")
 Max Height: 28cm (11")
 Opening Diameter: 8cm (3.25")

LIST PRICE

£325.00

