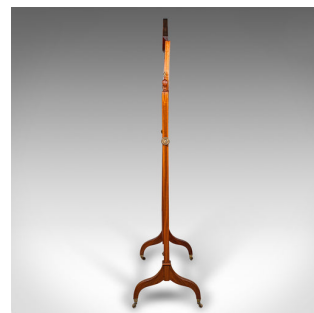
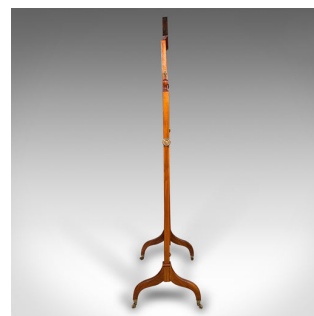
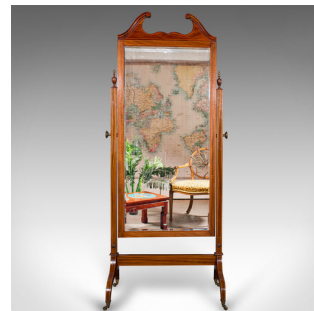


6' 5" Antique Gentlemans Outfitters Mirror, English, Dressing, Cheval, Victorian



DESCRIPTION

Our Stock # 24564

This is an antique gentleman's outfitters mirror. An English, mahogany and walnut dressing or cheval mirror, dating to the Victorian period, circa 1900.

- Of superior proportion at 6' 5" and fine craftsmanship throughout
- Displays a desirable aged patina and in good original order
- Select stocks beam with caramel hues and fine grain interest
- Original, bevelled mirror plate presents a desirable light foxing
- Striking swan neck pediment accentuates the top
- Set within a prominent frame, rotating upon its axis
- Delightful gadrooned urn finials adorn the uprights
- Broad frame encloses the quality mirror with a clear, bright reflection

- Exquisite boxwood and ebony inlays add visual interest throughout the frame

Search [London Fine for #24564](#) , or scan the QR code for more photos and details

DIMENSIONS

Max Width: 85cm (33.5")
 Max Depth: 47cm (18.5")
 Max Height: 200cm (78.75")
 Mirror Plate Width: 59.5cm (23.5")
 Mirror Plate Height: 128.5cm (50.5")

LIST PRICE

£2,850.00

