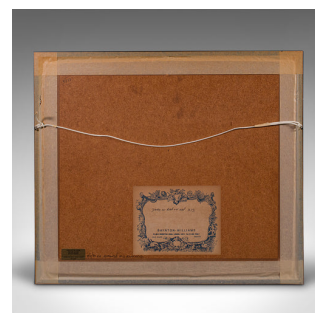


Antique County Map, Northamptonshire, English, Framed Cartography, Richard Blome



DESCRIPTION

Our Stock # 24431

This is an antique county map of Northamptonshire. An English, framed atlas engraving by Richard Blome, dating to the 17th century and later.

- <li class="p1">Fascinating cartography, oriented 90 degrees clockwise for prominence
- <li class="p1">Displaying a desirable aged patina within a later, quality frame
- <li class="p1">Charted by cartographer Richard Blome (1635 - 1705), the date given as 1673 on the map's reverse
- <li class="p1">Hand colouring adds an appealing level of detail to the borders of each Hundred
- <li class="p3">Hundreds were the administrative divisions within counties until the mid 19th century
- <li class="p3">Dressed to the rear with mounting wire for ease of hanging

This is a wonderful antique county map of Northamptonshire, with great colour and presented upon a 90 degree orientation. Delivered ready to display.

Search [London Fine for #24431](#) , or scan the QR code for more photos and details

DIMENSIONS

- Max Width: 45cm (17.75")
- Max Depth: 2cm (.75")
- Max Height: 39cm (15.25")
- Map Width: 32cm (12.5")
- Map Height: 26.5cm (10.5")

LIST PRICE

£585.00

