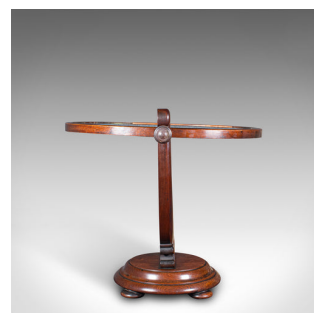
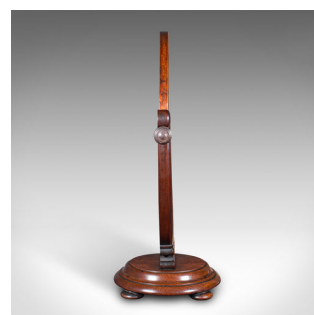


## Antique Dressing Table Mirror, English, Walnut, Oval Form, Boudoir, Victorian



### DESCRIPTION

Our Stock # 24540

This is an antique dressing table mirror. An English, walnut oval form mirror, dating to the early Victorian period, circa 1840.

- <li class="p1">Beautifully presented mirror with a pleasingly crafted frame
- <li class="p1">Displays a desirable aged patina and in good antique order
- <li class="p1">Quality walnut stocks present fine grain interest throughout
- <li class="p1">Rich caramel hues beam beneath a wax polish finish

- <li class="p1">Striking oval mirror plate presents a clear, bright reflection
- <li class="p1">Chamfered mirror frame rotates through to the horizontal position
- <li class="p1">Fascinating scrolled lyre mount set between the frame and base
- <li class="p1">Tiered base raised upon a trio of squat bun feet

This is a striking antique dressing table mirror, offering a delightful accompaniment to bedroom furnishings. Delivered ready for the home.

Search [London Fine for #24540](#) , or scan the QR code for more photos and details

### DIMENSIONS

Max Width: 50cm (19.75")

Max Depth: 27cm (10.75")

Max Height: 63.5cm (25")

Mirror Plate Width: 34cm (13.5")

Mirror Plate Height: 45cm (17.75")

