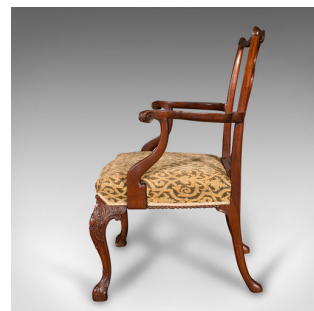


## Antique Drawing Room Armchair, English, Elbow Chair, Chippendale Revival, C.1900



### DESCRIPTION

Our Stock # 24621

This is an antique drawing room armchair. An English, mahogany elbow chair in Chippendale revival taste, dating to the late Victorian period, circa 1900.

- <li class="p1">Endearing Chippendale revival taste with pleasing colour and craftsmanship
- <li class="p1">Displaying a desirable aged patina and in good order throughout
- <li class="p1">Select stocks show fine grain interest and deep caramel hues
- <li class="p1">Benefits from a quality, professional reupholstering to classical taste

<li class="p1">Enthusiastically carved throughout, the lyre back and top rail accentuated with relief detail

<li class="p1">Serpentine arms terminate in scrolled knuckles with leaf motif adorning the terminus

<li class="p1">Arms suspended upon cabriole supports with fluted finish

<li class="p1">Pleasingly wide seat, offering a width between the supports of 52.5cm (26")

<li class="p1">Traditionally stuffed cushion sits at a comfortable height of 47.5cm (18.75")

### DIMENSIONS

Max Width: 66cm (26")  
 Max Depth: 67cm (26.5")  
 Max Height: 102cm (40.25")  
 Seat Width: 52.5cm (20.75")  
 Seat Depth: 54cm (21.25")  
 Seat Height: 46.5cm (18.25")

### LIST PRICE

£985.00

