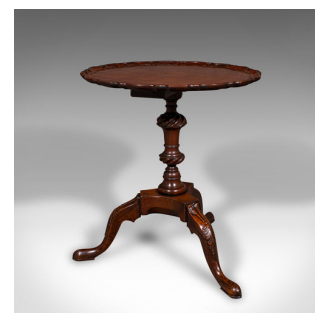


Antique Pie Crust Side Table, English, Walnut, Wine, Lamp, Victorian, Circa 1850



DESCRIPTION

Our Stock # 24622

This is an antique pie crust side table. An English, walnut wine or lamp table, dating to the early Victorian period, circa 1850.

- <li class="p1">Delightfully presented occasional table, with a distinctive appearance
- <li class="p1">Displaying a desirable aged patina and in good order throughout
- <li class="p1">Quality walnut stocks present superb grain interest
- <li class="p1">Warm caramel hues bask beneath a wax polish finish

- <li class="p1">Pie crust finish to the table edge a pleasingly classical touch
- <li class="p1">Raised upon a striking turned baluster support, with fascinating twist gadrooning
- <li class="p1">Decorated knees display relief carved feather motif
- <li class="p1">Standing upon a trio of broad cabriole legs, terminating in pad feet

This is a delightful antique pie crust side table, with a pleasingly decorative appearance throughout. Solid joints and construction, delivered ready for the home.

Search [London Fine for #24622](#) , or scan the QR code for more photos and details

DIMENSIONS

- Max Width: 54cm (21.25")
- Max Depth: 56cm (22")
- Max Height: 56.5cm (22.25")
- Top Diameter: 50cm (19.75")

LIST PRICE

£1,295.00

