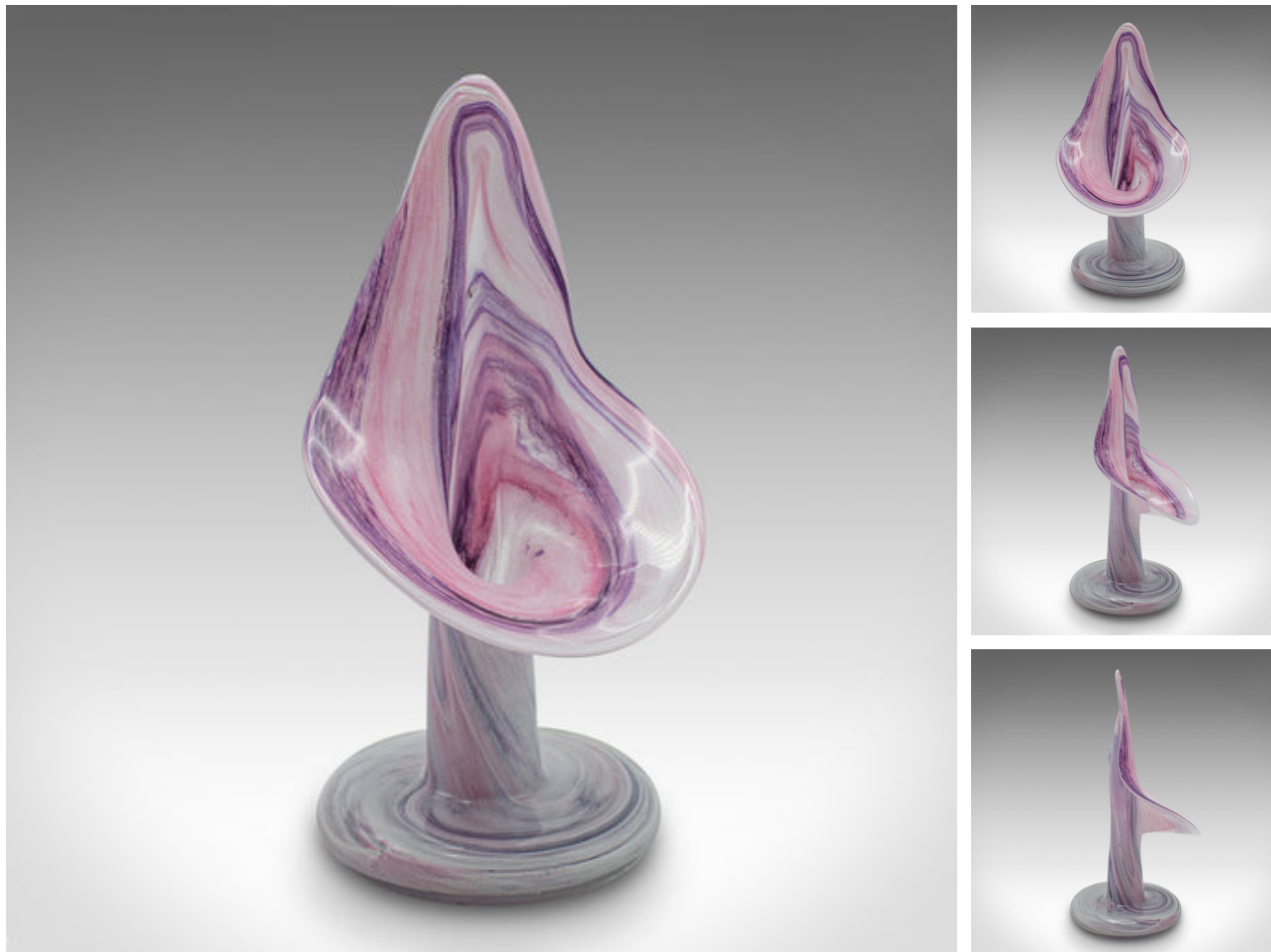


## Vintage Decorative Vase, Continental, Art Glass, Posy Sleeve, Late 20th Century

**DESCRIPTION**

Our Stock # 24651

This is a vintage decorative vase. A Continental, art glass posy sleeve, dating to the late 20th century, circa 1970.

<li class="p1">Highly distinctive and graced with superb colour

<li class="p1">Displays a desirable aged patina throughout

<li class="p1">Expressive blown glass accentuated with a swirled colour palette

<li class="p1">Form redolent of the striking 'Jack in the Pulpit' vase of 1915, sold by Tiffany in Art Nouveau taste

<li class="p1">The vase raised upon a wide circular foot

This is a fascinating vintage decorative vase, with appealing colour. Delivered ready to display.

Search [London Fine for #24651](#) , or scan the QR code for more photos and details

**DIMENSIONS**

Max Width: 10.5cm (4.25")

Max Depth: 11cm (4.25")

Max Height: 21.5cm (8.5")

**LIST PRICE**

£295.00

