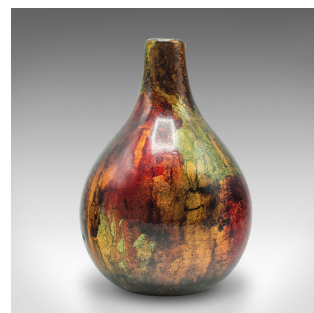
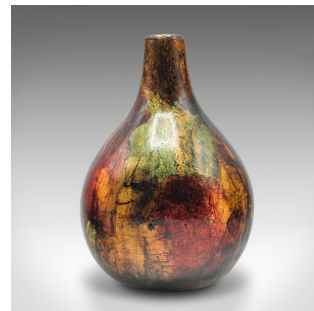


## Vintage Teardrop Vase, Continental, Ceramic, Posy Sleeve, Raku, Studio Pottery



## DESCRIPTION

Our Stock # 24654

This is a vintage teardrop vase. A Continental, ceramic posy sleeve, dating to the late 20th century, circa 1980.

In the manner of Japanese Raku ware, popular with Western ceramic studios

Presents a desirable aged patina and in good order throughout

Appealing teardrop form, accentuated with a vibrant, shimmering technique

Superb colour, with a palette of reds, greens and yellows

Metallic foil affect applied to the bulbous form and covered with a clear glaze

This is a striking vintage teardrop vase, graced with great colour and a distinctive finish. Delivered ready to display.

Search [London Fine for #24654](#) , or scan the QR code for more photos and details

## DIMENSIONS

Max Width: 11.5cm (4.5")

Max Depth: 11.5cm (4.5")

Max Height: 17cm (6.75")

Opening Diameter: 1.5cm (.5")

## LIST PRICE

£195.00

