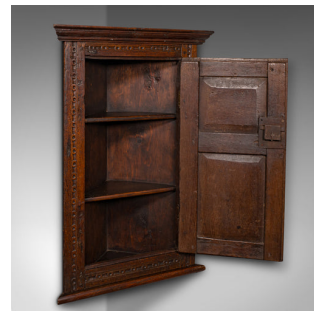


Small Antique Corner Cabinet, English Oak, Wall Cupboard, William and Mary, 1690



DESCRIPTION

Our Stock # 24566

This is a small antique corner cabinet. An English, oak wall cupboard, dating to the William & Mary period and later, circa 1690.

- <li class="p1">Appealing corner cupboard with fascinating age and finish
- <li class="p1">Displays a desirable aged patina throughout
- <li class="p1">Select oak stocks show fine grain interest and deep chestnut hues
- <li class="p1">Would make for a delightful addition to any traditional space

<li class="p1">Wide crown moulding above an engraved lobe border, repeated across the fascia

<li class="p1">Quality antique brass to the hinges and escutcheon presents warm golden hues

<li class="p1">Field panel door dressed with a shaped lock escutcheon — in working order, key present

<li class="p1">The door adorned with the date of 1686, above a corn husk motif

<li class="p1">Lower panel hosts a charming sunflower scene

DIMENSIONS

Max Width: 49.5cm (19.5")

Max Depth: 25cm (9.75")

Max Height: 73cm (28.75")



Search [London Fine](#) for #24566 , or scan the QR code for more photos and details

+44 (0) 207 1833 511

London Fine Ltd
 The Antique Village
 The Old Whiteways Cider Factory
 Hele, Devon, EX5 4PW

sales@londonfine.co.uk
 E. & O. E.