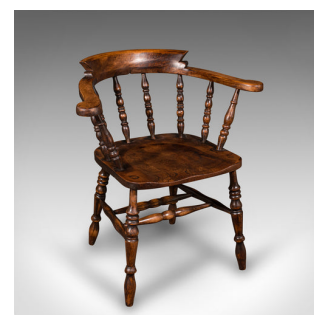


Pair Of Antique Smoker's Bow Chairs, English Beech Captain's Armchair,
Victorian



DESCRIPTION

Our Stock # 24666

This is a pair of antique smoker's bow chairs. An English, beech and elm captain's armchair, dating to the late Victorian period, circa 1890.

- Excellent country kitchen appeal with this pair of classic bows
- Displaying a desirable aged patina and in good order
- Select beech and elm stocks show fine grain interest throughout
- Deep caramel hues beam beneath a quality, wax polish finish

• The upper rail crowned with a prominent arched back rest for added comfort and support

- Ring turned spindles rise obliquely supporting the striking horseshoe armrest
- Each arm terminates in out-turned scrolled hand grips
- Standing upon a quartet of stout baluster legs united by a double 'H' stretcher

This is a desirable pair of antique smoker's bow chairs, with great colour to the quality stocks and fine English craftsmanship. Solid joints and construction, delivered ready for the home.

DIMENSIONS

- Chair 1 Width: 71cm (28")
- Chair 1 Depth: 53cm (20.75")
- Chair 1 Height: 78.5cm (31")
- Seat Width: 38cm (15")
- Seat Depth: 40cm (15.75")
- Seat Height: 44.5cm (17.5")
- Chair 2 Width: 70.5cm (27.75")
- Chair 2 Depth: 53.5cm (21")
- Chair 2 Height: 78.5cm (31")
- Seat Width: 38cm (15")
- Seat Depth: 40cm (15.75")
- Seat Height: 44.5cm (17.5")



Search [London Fine for #24666](#) , or scan the QR code for more photos and details

+44 (0) 207 1833 511

London Fine Ltd
The Antique Village
The Old Whiteways Cider Factory
Hele, Devon, EX5 4PW

sales@londonfine.co.uk
E. & O. E.