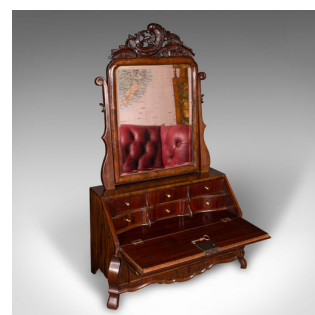




Antique Bureau Mirror, English, Dressing Table, Boudoir, Georgian, Circa 1800



DESCRIPTION

Our Stock # 24668

This is an antique bureau mirror. An English, mahogany and oak dressing table mirror, dating to the Georgian period, circa 1800.

<li class="p1">Fascinating bureau form, with a suite of drawers and great colour

<li class="p1">Displays a desirable aged patina and in good order throughout

<li class="p1">Select stocks present fine figuring and deep caramel hues

<li class="p1">Bevelled mirror plate presents a desirable light foxing

<li class="p1">Prominent slot-in carved pediment with scrolled leaf fretwork

<li class="p1">Mirror plate rotates within shaped uprights, the frame edge gently chamfered

<li class="p1">Good reflective quality to the plate, with a bright appearance

<li class="p1">Fall-front bureau base and lower drawer with brass lock escutcheons – key present

<li class="p1">Drawer boxes crafted from oak, each in pleasingly clean order

Search [London Fine for #24668](#) , or scan the QR code for more photos and details

DIMENSIONS

Max Width: 47cm (18.5")

Closed Depth: 21.5cm (8.5")

Extended Depth: 32.5cm (12.75")

Max Height: 72cm (28.25")

Mirror Plate Width: 24.5cm (9.75")

Mirror Plate Height: 30.5cm (12")

LIST PRICE

£1,295.00

