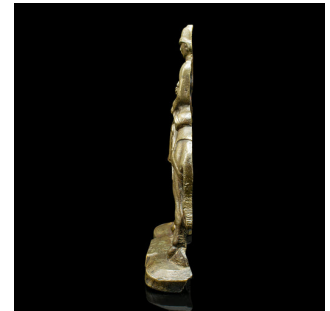
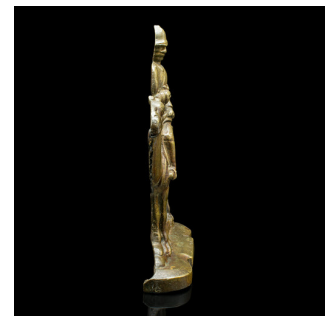


## Antique Figurative Doorstop, Continental, Bronze, Decor, Door Keeper, Victorian



### DESCRIPTION

Our Stock # 24611

This is an antique figurative doorstop. A Continental, bronze decorative door keeper, dating to the late Victorian period, circa 1890.

Of Anglo-Irish descent, Viscount Wolseley (1833 - 1913) - whose military and political career spread across the Western hemisphere, was based in Egypt in the early 1880s, which led to the capture of the Suez Canal and saw him honoured as the Baron of Cairo in November 1882.

<li class="p1">Fascinating door stopper, with a historical figure riding a camel

<li class="p1">Displays a desirable aged patina and in good order throughout

<li class="p1">Quality bronze cast with skilful attention to detail and appealing finish

<li class="p1">Viscount Wolseley situated proudly upon the camel, with sword and reign detailing

<li class="p1">Offers a weight in the hand of 1.81kg (3.99 lb)

This is a charming antique figurative doorstop, with a distinctive desert theme to the rider and camel. Ideal for keeping doors at bay throughout the home, delivered ready to display.

### DIMENSIONS

Max Width: 18.5cm (7.25")

Max Depth: 5cm (2")

Max Height: 28cm (11")

### LIST PRICE

£495.00



Search [London Fine for #24611](#) , or scan the QR code for more photos and details

+44 (0) 207 1833 511

London Fine Ltd  
 The Antique Village  
 The Old Whiteways Cider Factory  
 Hele, Devon, EX5 4PW

sales@londonfine.co.uk  
 E. & O. E.