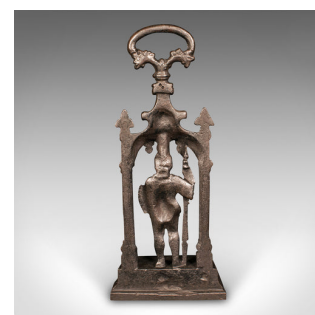
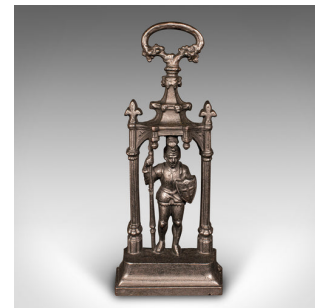


Heavy Antique Door Sentry, English Cast Iron, Knight Doorstop, Keeper, Victorian



DESCRIPTION

Our Stock # 24612

This is a heavy antique door sentry. An English, cast iron knight doorstop, dating to the early Victorian period, circa 1850.

- <li class="p1">Substantial, charming door stop with a delightful visual appeal
- <li class="p1">Displays a desirable aged patina and in good order
- <li class="p1">Robust cast iron form with a good, consistent graphite finish throughout
- <li class="p1">Set within a sentry box, the figural knight stands guard with his spear
- <li class="p1">Shaped handle with foliate decoration stands prominently above the whole
- <li class="p1">Excellent weight in the hand at 7.85kg (17.3 lb)

This is a fascinating antique door sentry, with a superb weight well suited to holding back the heaviest of doors. Delivered ready for duty within the home.

Search [London Fine for #24612](#) , or scan the QR code for more photos and details

DIMENSIONS

- Max Width: 19cm (7.5")
- Max Depth: 8cm (3.25")
- Max Height: 43.5cm (17.25")

LIST PRICE

£895.00

