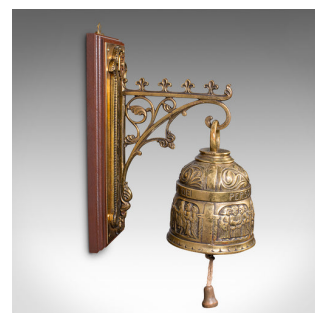


Antique Coffee House Bell, Italian, Brass, Wall Mounted, Cafe, Edwardian, C.1910



DESCRIPTION

Our Stock # 24535

This is an antique coffee house bell. An Italian, brass and mahogany wall mounted cafe bell, dating to the Edwardian period, circa 1910.

- <li class="p1">Charmingly decorative example, with an ornate mount
- <li class="p1">Displays a desirable aged patina and in good order
- <li class="p1">Brass presents deep golden hues, with polished finish to mount
- <li class="p1">Select stocks to the plinth presents a deep caramel colour

- <li class="p1">Robust, ornate arm hosts the relief decorated bell
- <li class="p1">Bell clapper finished with a small rope pull and tactile brass handle
- <li class="p1">Bold ring makes a distinctive, prominent sound - ideal for a busy cafe

- <li class="p1">Scenes of figures adorn the bell circumference, with scrolled pattern detail
- <li class="p1">Engraved with the Latin phrase Persona Grata ad Gloriam Dei

Search [London Fine for #24535](#) , or scan the QR code for more photos and details

DIMENSIONS

- Max Width: 14cm (5.5")
- Max Depth: 25cm (9.75")
- Max Height: 43cm (17")
- Bracket Width: 12.5cm (5")
- Bracket Depth: 20cm (7.75")
- Bracket Height: 35cm (13.75")
- Bell Diameter: 14cm (5.5")
- Bell Height: 19cm (7.5")

