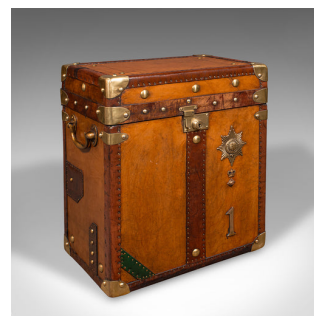


## Vintage Pair Of Campaign Luggage Chests, English, Leather, Bedside, Nightstand



### DESCRIPTION

Our Stock # 24645

This is a vintage pair of campaign luggage cases. An English, leather and brass bedside nightstand, dating to the late 20th century, circa 1990.

- <li class="p1">Exquisite casework, with beautifully appointed detail and finishes
- <li class="p1">Displaying a desirable aged patina and in good order throughout
- <li class="p1">Quality leather tanned to a deep caramel hue with lightly aged finish
- <li class="p1">Bound to corners with brass cappings over leather straps

- <li class="p1">Fascia dressed with quality brass slide clasps – keys absent
- <li class="p1">Once open, the lids remaining raised upon cornflower blue straps
- <li class="p1">Bright burgundy coloured textile linings in pleasingly clean order
- <li class="p1">The tactile lining adorned with brass press stud finish

- <li class="p1">Military interest to the front fascia, with the Coldstream Guards emblem

Search [London Fine for #24645](#) , or scan the QR code for more photos and details

### DIMENSIONS

- Max Width: 42.5cm (16.75")
- Max Depth: 28.5cm (11.25")
- Max Height: 51cm (20")
- Internal Width: 37cm (14.5")
- Internal Depth: 23.5cm (9.25")
- Internal Height: 46cm (18")

