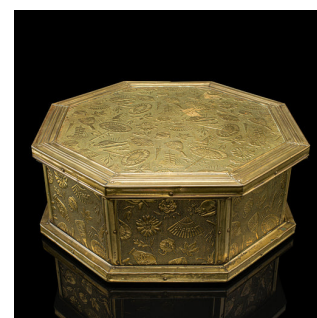


Antique Octagonal Sewing Box, English, Brass, Workbox, Relief Decor, Edwardian



DESCRIPTION

Our Stock # 24718

This is an antique octagonal sewing box. An English, brass workbox with relief decor, dating to the Edwardian period, circa 1910.

- Delightful box for the avid sewer, with a superb relief finish
- Displays a desirable aged patina and in good order throughout
- Quality brass presents striking golden tones to the octagonal form
- Surfaces bedazzle with fascinating relief icons, with animals and objects
- Opening to reveal the original padded interior, presented in clean condition

This is a fine antique octagonal sewing box, with a wonderfully decorative appearance. Delivered ready for the home.

Search [London Fine for #24718](#) , or scan the QR code for more photos and details

DIMENSIONS

- Max Width: 30.5cm (12")
- Max Depth: 30.5cm (12")
- Max Height: 11.5cm (4.5")
- Internal Width: 25.5cm (10")
- Internal Depth: 25.5cm (10")
- Internal Height: 8.5cm (3.25")

