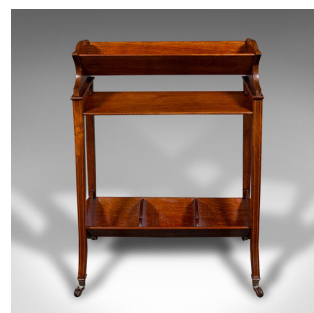


Antique Book Trough Stand, English, Walnut, Boxwood, Lounge Bookcase, Edwardian



DESCRIPTION

Our Stock # 24700

This is an antique book trough stand. An English, walnut and boxwood lounge bookcase, dating to the Edwardian period, circa 1910.

<li class="p1">Delightfully mobile stand, ideal for wheeling into a hotel lounge or home library

<li class="p1">Displays a desirable aged patina and in good order

<li class="p1">Select walnut stocks present fine grain interest throughout

<li class="p1">Figuring graced with attractive caramel hues

<li class="p1">Arranged as an upper trough and newspaper shelf, with a trio of segments to the lower rest

<li class="p1">Skilfully inlaid with fan shell marquetry, crafted from boxwood

<li class="p1">Fan shaped bracket ends and legs accentuated with tasteful stringing

<li class="p1">Swept legs at each corner, riding smoothly upon brass and ceramic castors

This is an appealing antique book trough stand, usefully set upon castors for moving around a room. Solid joints and construction, delivered ready for the home.

DIMENSIONS

Max Width: 54cm (21.25")

Max Depth: 27.5cm (10.75")

Max Height: 75cm (29.5")

Upper Trough Width: 49cm (19.25")

Upper Trough Depth: 11.5cm (4.5")

Lower Trough (x3) Width: 16cm (6.25")

Lower Trough Depth: 10.5cm (4.25")

Shelf Width: 47.5cm (18.75")

Shelf Depth: 19.5cm (7.75")

Shelf Height: 8.5cm (3.25")

LIST PRICE

£1,195.00



Search [London Fine for #24700](#) , or scan the QR code for more photos and details

+44 (0) 207 1833 511

London Fine Ltd
 The Antique Village
 The Old Whiteways Cider Factory
 Hele, Devon, EX5 4PW

sales@londonfine.co.uk
 E. & O. E.