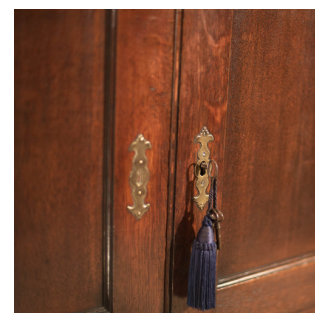




Georgian Antique Panelled Wardrobe, c.1800



DESCRIPTION

Our Stock # LFA-1414 This is an antique, Georgian, oak wardrobe dating to c.1800. Raised on a bracketed stand with twin drawers, this field panelled cupboard offers generous storage within currently featuring turned, hanging pegs around the upper perimeter, the cupboard back panelled in pine and topped with a modest crown moulding above. The dovetailed drawers are cock beaded and dressed with pierced brass, batwing handles with working locks and individual keys. The cupboard doors also feature brass escutcheons complete with a working iron lock and key. A versatile cabinet with good colour and patina, delivered waxed, polished and ready for the home.

Search [London Fine](#) for #LFA-1414 or scan the QR code for more photos and details

DIMENSIONS

Max Width: 132cm (52")
Max Depth: 59cm (23.25")
Max Height: 208cm (82")

