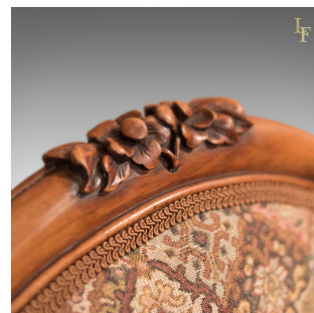


Antique Nursing Chair, English Regency c1820



DESCRIPTION

Our Stock # 10.1434

This is a Regency, antique nursing chair dating to c.1820.

The quality walnut frame glows in warm honey hues with depth in the aged patina and tonal qualities of this period piece.

Riding upon the original ceramic castors, the splayed cabriole front legs offer good shape from the undercut tips through deep relief, foliate carved knees down to the typical scrolled toes. The serpentine seat rail sinuously uniting the two.

The rear seat stiles seamlessly loop up and around the padded rear seat panel cresting with carved detail. The 'show back' offering centre room placement.

Well sprung and traditionally stuffed the seat is finished in a complimentary, stylised cloth finished with braided trim.

A fine example with solid joints and offering a comfortable seat, delivered ready for the home.

Search [London Fine for #10.1434](#) , or scan the QR code for more photos and details

DIMENSIONS

Max Width: 46cm (18")

Max Depth: 56cm (22")

Max Height: 88cm (34.75")

Seat Width: 43cm (17")

Seat Depth: 38cm (15")

Seat Height: 34cm (13.5")

