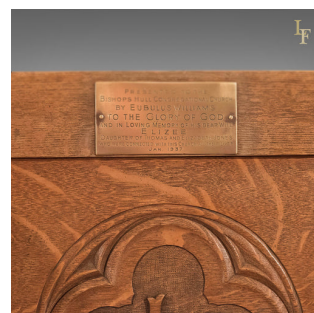


## Antique Glastonbury Chair, Early C20th in Oak



### DESCRIPTION

Our Stock # LFA-1440 This is an antique Glastonbury chair dating to the early 20th century, c.1937. The eponymous Glastonbury chair has been made for centuries, usually in oak and following a design thought to have first been made for Richard Whiting (1461 – 15 November 1539), an English clergyman and the last Abbot of Glastonbury. This fine example is crafted in choice, thick cuts of English oak displaying medullary rays and featuring tusked joints – the 'keys' of wood were designed to be removed to simply disassemble the chair for transportation. The austere framework has been highlighted with well executed carvings to the lower arms, floral in form and the seat back decorated with the initials 'thz' within an encircled quatrefoil. The 'X' frame legs are united by a modestly ring turned stretcher and a thin seat pad added for minimal comfort. A removable brass plaque is affixed to the crest rail and reads 'Presented to the Bishops Hull Congregational Church by Eubulus Williams to the Glory of God and in loving memory of his dear wife Elizee daughter of Thomas and Elizabeth Jones who were connected with this church all their lives January 1937'. A super chair, delivered waxed, ...

Search [London Fine for #LFA-1440](#) or scan the QR code for more photos and details

### DIMENSIONS

Max Width: 67cm (26.5")  
 Max Depth: 51cm (20")  
 Max Height: 86cm (33.75")

