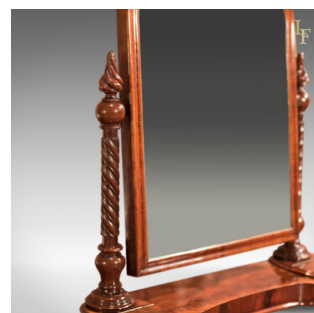
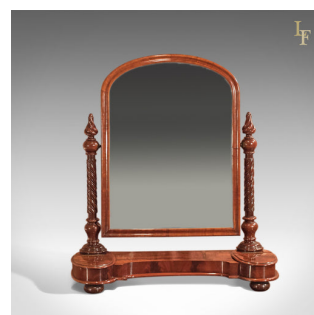


Antique Mirror, Regency Dressing Table, c1820



DESCRIPTION

Our Stock # LFA-1438 This is an antique, Regency vanity mirror dating to c.1820. Raised on squat bun feet, the shaped platform is flanked by a pair of ovular, hinged lid, velvet lined jewellery compartments. The flame mahogany displaying the most wonderful grain detail in the highly polished finish that sings quality. A pair of helically reeded columns rise from turned bulbs into ball mirror supports beneath extremely well executed conical, helically reeded finials of exceptional quality and condition. The dome topped, mercury glass mirror plate gently sparkles with a minor flaw to the lower left side but nothing to detract from the overall appeal of this attractive piece. The shaped mahogany frame work in first class order with the finished back complimenting it. In fine order solid and stable, delivered waxed, polished and ready for the home.

Search [London Fine for #LFA-1438](#) or scan the QR code for more photos and details

DIMENSIONS

Max Width: 74cm (29.25")
 Max Depth: 29.5cm (11.5")
 Max Height: 81cm (32")

