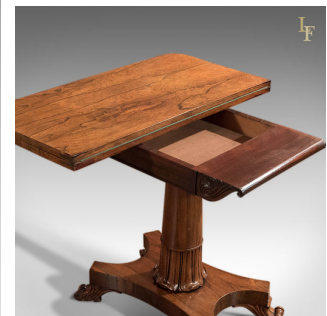


## Antique Card Table, Victorian Rosewood Table



### DESCRIPTION

Our Stock # LFA-1463 This is an antique, fold-over card table dating to the mid-Victorian period c.1850. This table displays the most wonderful rosewood grain detail and a desirable aged patina in a piece of good proportion. Closed, it makes for an attractive side or lamp table, unfolded ideal as a card, games or tea table. Raised on scrolled feet with hidden roller castors, the tapered column rises from the quatrefoil base from a foliate carved stem. The frieze is flanked by a pair of carved scrolls and the top swivels and unfolds to reveal a baized surface over a hidden well – ideal for card and games storage. A fine example, stable with solid joints, delivered waxed polished and ready for the home.

Search [London Fine for #LFA-1463](#) or scan the QR code for more photos and details

### DIMENSIONS

Max Width: 92cm (36.25")  
 Closed Depth: 45cm (17.75")  
 Open Depth: 90cm (35.5")  
 Max Height: 74.5cm (29.25")

